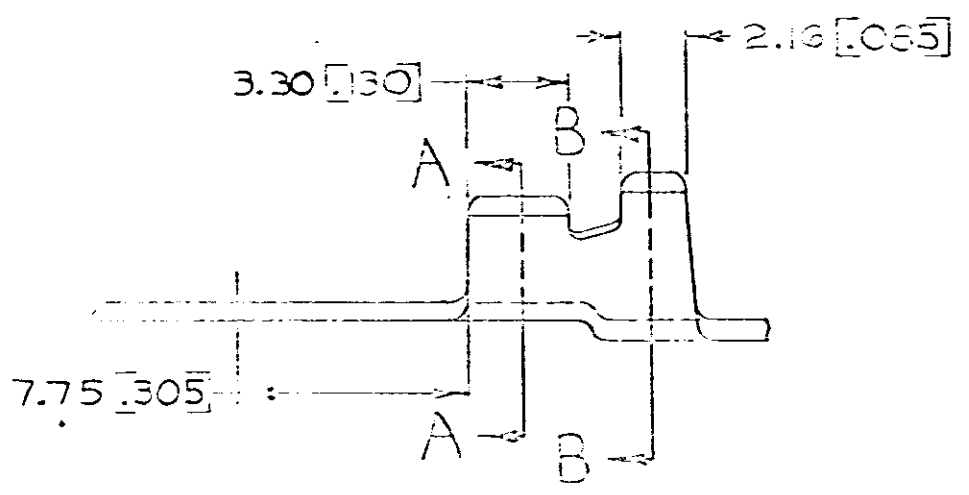
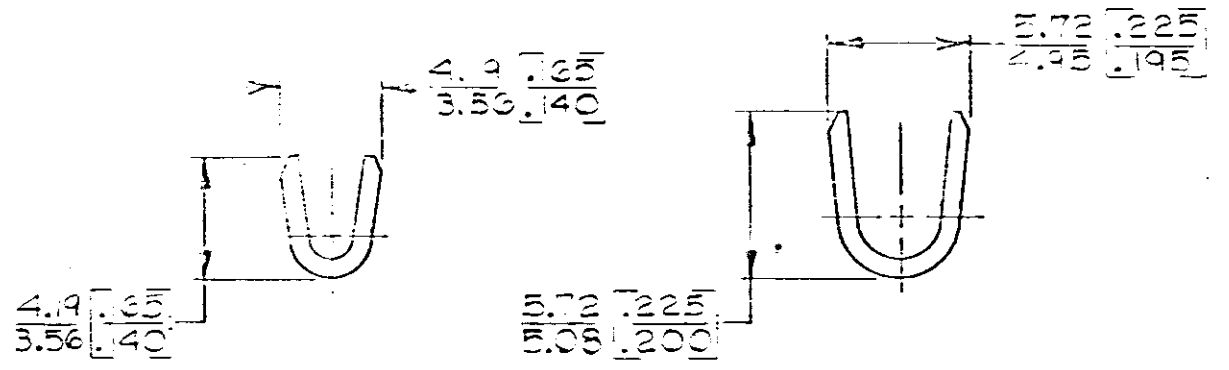
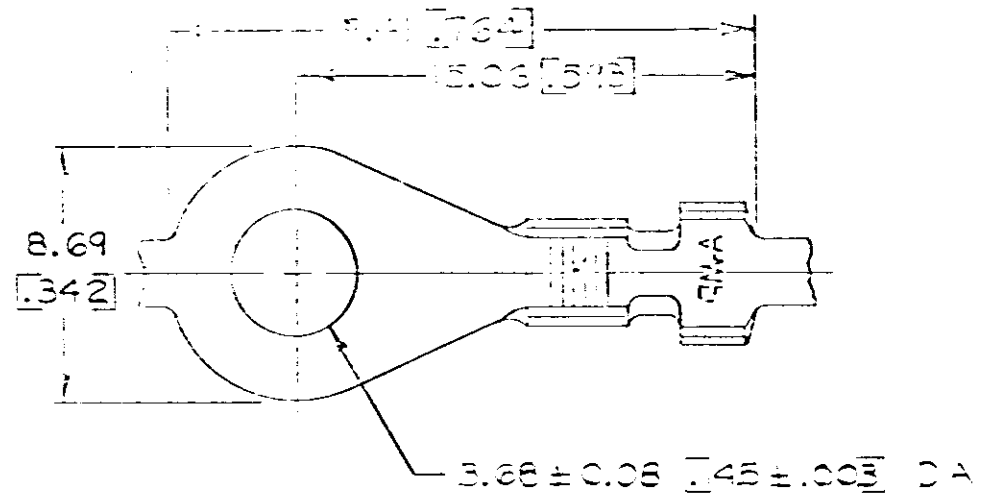


AMP INCORPORATED, HARRISBURG, PA.  
 ALL RIGHTS RESERVED. AMP INCORPORATED PRODUCTS  
 COVERED BY U. S. AND FOREIGN PATENTS AND/OR PATENTS PENDING.

REVISIONS						
P	F	ZONE	LTR	DESCRIPTION	DATE	APPROVED
1			3	REWORKING REVISED	5-1-73	



M3.5	0.5-14 mm <sup>2</sup>	2.54-3.56	TIN	0.76	.030	42033-2
#6	20-6	.00-.40	COUE	BRASS		42033
STUD SIZE	WIRE RANGE	INSULATION RANGE	FINISH	MATERIAL		PART NO

UNLESS OTHERWISE SPECIFIED DIMENSIONS ARE IN INCHES. TOLERANCES ON DECIMALS ANGLES

CONTRACT NO. DR. CHK. APPD. DSON APPD. OTHER APPD.

AMP INCORPORATED Harrisburg, Pa.

NAME: RING

SIZE: 3

CODE IDENT NO: 0077

DRAWING NO: 42033

SCALE: SHEET

**METRIC**

1. CONTINUOUS STRIP ON REELS  
 2. DIMENSIONS IN BRACKETS  
 ARE IN INCHES.